

# SHOWA

by GENUINE PARTS EUROPE



# 2025

# SHOWA

by GENUINE PARTS EUROPE



## INFORMATION

Official catalog for SHOWA GENUINE PARTS.

All the information you need about Showa equipped MX bikes.

HONDA CRF, KAWASAKI KXF and SUZUKI RMZ.

Spare parts & oil is listed.

SHOWA GENUINE parts warranty the perfect fitting, quality and performance.

To make a correct use it's necessary to identify the model and year of the bike firstly, search procedure:

YEAR / MODEL / CAPACITY

Example:  
2011 / KXF / 250

All the pictures are orientative, just the ref are concordant with the correct parts.

If you have any question please e-mail us!  
[sales@showabygenuinepartseurope.com](mailto:sales@showabygenuinepartseurope.com)



# SHOWA

by GENUINE PARTS EUROPE



INFORMATION

# SHOWA

**G e n u i n e P a r t s**

## ATTENTION!

Genuine Showa parts only with Genuine packaging!





Application list	4
FRONT FORK	5
Ø 47 mm	12
Ø 47 mm SFF	19
Ø 48 mm	20
Ø 48 mm SFF	28
Ø 49 mm SFF AIR	36
Ø 49 mm	49
REAR SHOCK	59
OIL	67
GREASE AND SLACKER	68
WORKS SUSPENSIONS	71

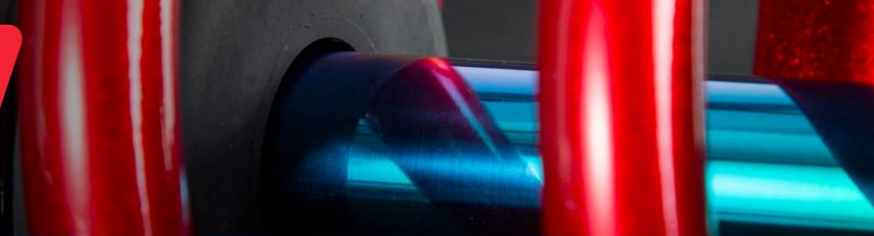


## SHOWA EQUIPPED LIST

HONDA	FRONT FORK				SHOCK		
	Ø 47	Ø 48	SFF Ø 48	SFF AIR Ø 49	Ø 49	Ø 16	Ø 18
CRF 250 09	✓					✓	
CRF 250 10 - 12		✓				✓	
CRF 250 13 - 14		✓				✓	
CRF 250 15 - 17				✓		✓	
CRF 250 18 - 25					✓	✓	
CRF 450 17 - 25					✓	✓	
CRF X 450 17 - 25					✓	✓	

KAWASAKI	Ø 47	Ø 48	Ø 48 SFF	Ø 49 SFF AIR	Ø 49	Ø 16	Ø 18
KXF 250 09 - 10	✓					✓	
KXF 250 11 - 12	✓					✓	
KXF 250 13 - 19			✓			✓	
KXF 250 25					✓	✓	
KXF 450 15 - 18				✓		✓	
KXF 450 19 - 25					✓	✓	

SUZUKI	FRONT FORK				SHOCK		
	Ø 47	Ø 48	SFF Ø 48	SFF AIR Ø 49	Ø 49	Ø 16	Ø 18
RMZ 250 09 - 12	✓						✓
RMZ 250 13 - 15			✓				✓
RMZ 450 09 - 12	✓						✓
RMZ 450 13 - 14			✓				✓
RMZ 450 15 - 17				✓			✓
RMZ 450 18 - 25					✓	✓	



## SERVICE KITS FRONT FORK

### APPLICATION CHART

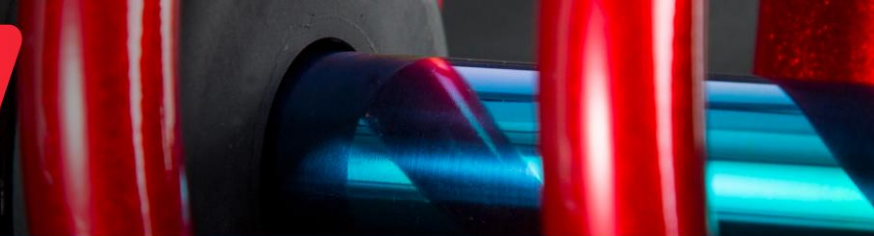


FRONT FORK SERVICE KIT WITHOUT OIL:  
2 OIL SEAL / 2 DUST SEAL / 2 GUIDE BUSH / 2 SLIDE BUSH

REFERENCE	NAME PART	QTY	HONDA												
			Ø 37	Ø 37	Ø 47	Ø 47	Ø 48	Ø 49	Ø 47	Ø 49	Ø 49	Ø 49	Ø 49	Ø 49	
			02-07 CR 85	07-20 CRF 150	97-07 CR 250	04-09 CRF 250	10-14 CRF 250	15-24 CRF 250	25 CRF 250	02-08 CRF 450R	17-23 CRF 450R	17-23 CRF 450WE	17-23 CRF 450X	25 CRF 450/450WE/450X	
FMAN04701WO	SERVICE KIT FF NO OIL	1			✓	✓					✓				
FMAN04801WO	SERVICE KIT FF NO OIL	1					✓								
FMAN04802WO	SERVICE KIT FF NO OIL	1													
FMAN04901WO	SERVICE KIT FF NO OIL	1								✓					✓
FMAN04902WO	SERVICE KIT FF NO OIL	1													
FMAN04903WO	SERVICE KIT FF NO OIL	1													
FMAN08501WO	SERVICE KIT FF NO OIL	1	✓	✓											

REFERENCE	NAME PART	QTY	KAWASAKI			
			Ø 47	Ø 48	Ø 49	Ø 49
			06-12 KXF 250	13-19 KXF 250	25 KXF 250	15-25 KXF 450
FMAN04701WO	SERVICE KIT FF NO OIL	1	✓			
FMAN04801WO	SERVICE KIT FF NO OIL	1				
FMAN04802WO	SERVICE KIT FF NO OIL	1		✓		
FMAN04901WO	SERVICE KIT FF NO OIL	1			✓	✓
FMAN04902WO	SERVICE KIT FF NO OIL	1				
FMAN04903WO	SERVICE KIT FF NO OIL	1				
FMAN08501WO	SERVICE KIT FF NO OIL	1				

REFERENCE	NAME PART	QTY	SUZUKI										
			Ø 37	Ø 47	Ø 47	Ø 47	Ø 48	Ø 47	Ø 48	Ø 49	Ø 49		
			02-20 RM 85	01-08 RM 125	04-09 RM 250	07-12 RMZ 250	13-15 RMZ 250	04-12 RMZ 450	13-14 RMZ 450	15-17 RMZ 450	18-25 RMZ 450		
RMAN04701WO	SERVICE KIT FF NO OIL	1		✓	✓	✓			✓				
FMAN04801WO	SERVICE KIT FF NO OIL	1											
FMAN04802WO	SERVICE KIT FF NO OIL	1					✓			✓			
FMAN04901WO	SERVICE KIT FF NO OIL	1											
FMAN04902WO	SERVICE KIT FF NO OIL	1										✓	
FMAN04903WO	SERVICE KIT FF NO OIL	1											✓
FMAN08501WO	SERVICE KIT FF NO OIL	1											



## SERVICE KITS REAR SHOCK

### APPLICATION CHART



REAR SHOCK SERVICE KIT:  
PISTON RING / PISTON O RING / DUST SEAL / OIL SEAL / GUIDE BUSH / SEAL HEAD - ORING / STOPPER RUBBER / BLADDER

REFERENCE	HONDA									
	Ø 16	Ø 16	Ø 16	Ø 16	Ø 16	Ø 16	Ø 16	Ø 16	Ø 16	Ø 16
	02-07 CR 85	07-20 CRF 150	04-07 CR 250	09 CRF 250	10-17 CRF 250	18-24 CRF 250	25 CRF 250	17-24 CRF 450	25 CRF 450	17-24 CRF 450X
RMAN01601				✓			✓			
RMAN01602					✓					✓
RMAN01603										
RMAN01604										
RMAN01605						✓		✓		
RMAN01606										
RMAN01607			✓							
RMAN01608									✓	
RMAN01801										
RMAN01802										
RMAN01803										
RMAN08501	✓	✓								

REFERENCE	KAWASAKI				
	Ø 16	Ø 16	Ø 16	Ø 16	Ø 16
	09-19 KXF 250	25 KXF 250	15 KXF 450	16-18 KXF 450	19-25 KXF 450
RMAN01601	✓			✓	
RMAN01602					
RMAN01603			✓		
RMAN01604					
RMAN01605					
RMAN01606		✓			✓
RMAN01607					
RMAN01608					
RMAN01801					
RMAN01802					
RMAN01803					
RMAN08501					

REFERENCE	SUZUKI							
	Ø 14	Ø 18	Ø 18	Ø 18	Ø 18	Ø 18	Ø 18	Ø 16
	02-20 RM 85	09 RMZ 250	10 RMZ 250	11-15 RMZ 250	09 RMZ 450	10 RMZ 450	11-17 RMZ 450	18-25 RMZ 450
RMAN01601	✓			✓				
RMAN01602								
RMAN01603			✓					
RMAN01604								✓
RMAN01605								
RMAN01606		✓			✓			
RMAN01607								
RMAN01608								
RMAN01801		✓			✓			
RMAN01802			✓			✓		
RMAN01803								
RMAN08501	✓			✓			✓	



## CARTRIDGE KIT



### CARTRIDGE KIT

Transform your WP XPLOR 48mm into high performance SHOWA TWIN CHAMBER forks MADE IN JAPAN.

No axle holder replacement or disassembly needed.

Upgrade operational function and performance of your fork with the cartridge kit, pressurized system, no damping loss.

Designed using the suspension technology proven and fed back from the racing department.

Featuring Showa's cutting-edge technologies as Kashima coating.

Settings can be adjusted externally:  
COMPRESSION and REBOUND.

**Part number: KITCRXP01 / KITCRAE01**



## CARTRIDGE KIT



### CARTRIDGE KIT CONTENT

- 2 complete TWIN CHAMBER CARTRIDGE
- 2 ud BUSH ADAPTER SET
- 2 liters oil SS05

**Part number: KITCRXP01 / KITCRAE01**



## CARTRIDGE KIT



### TECHNICAL DETAILS

SHOWA TWIN CHAMBER technology.

35 mm Ø COMP PISTON

24 mm Ø REB PISTON

12,5 mm Ø ROD

Kashima coating main cylinder

Spring seat with slide bush.

OEM WP springs can be used.

Spring preload adjustable.

COMP & REB clickers.

**Part number: KITCRXP01 / KITCRAE01**



## CARTRIDGE KIT



### APPLICATION LIST

#### **KITCRXP01 / ENDURO XPLOR**

KTM

EXC / EXC-F / WC from 2017

HUSQVARNA

TE / FE from 2017

GASGAS

EC / EC-F from 2021

#### **KITCRAE01 / MOTOCROSS XACT**

KTM

SX / SX-F from 2016

HUSQVARNA

FC / TC from 2016

GASGAS

MC / MC-F from 2021



## FRONT FORK PARTS

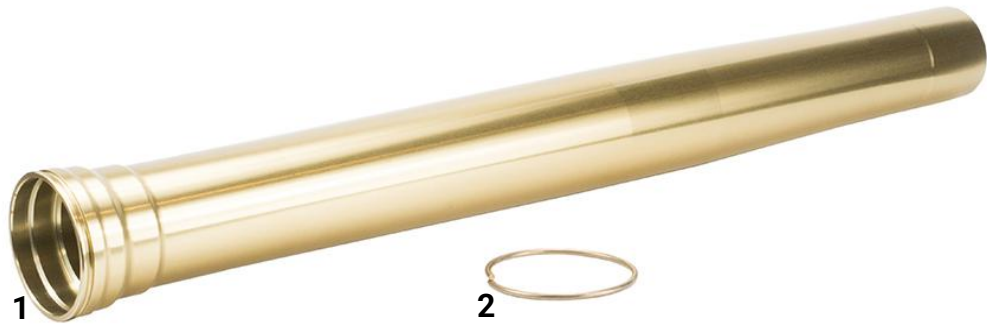




FRONT FORK 47 mm

CRF 250 09 / KXF 250 09-10 / RMZ 250 09-12 / RMZ 450 09-12

- OUTERTUBE
- SLIDEPIPE
- STOPPER RING



N	REFERENCE	NAME PART	QTY	09 CRF 250	09-10 KXF 250	11 KXF 250	12 KXF 250	09-12 RMZ 250	09-12 RMZ 450
1	FJ6557301	OUTER TUBE	2		✓				
	FJ6556801		2				✓		
	FJ6557501 FJ6556701		2			✓	✓		
	FJ6500011		2	✓					✓
	F36600001 F36600003		2	✓	✓	✓		✓	✓



1

N	REFERENCE	NAME PART	QTY	09 CRF 250	09-10 KXF 250	11 KXF 250	12 KXF 250	09-12 RMZ 250	09-12 RMZ 450
1	F30504701	SLIDE PIPE	2		✓			✓	✓
	F30504702		2	✓					
	F30504706		2			✓	✓		
			2						



FRONT FORK 47 mm

CRF 250 09 / KXF 250 09-10 / RMZ 250 09-12 / RMZ 450 09-12

- BUSH
- SEAL



N	REFERENCE	NAME PART	QTY	09	09-12	09-12	09-12
				CRF 250	KXF 250	RMZ 250	RMZ 450
1	F27604702	SLIDE BUSH	2	✓	✓	✓	✓
2	F27504702	GUIDE BUSH	2	✓	✓	✓	✓
3	F35300004	SEAL SPASER	2	✓			
	F35300003		2		✓	✓	✓
4	F32004701	OIL SEAL	2	✓	✓	✓	✓
5	F36500002	OIL SEAL STOPPER RING	2	✓	✓	✓	✓
6	F33004701	DUST SEAL	2	✓	✓	✓	✓



## FRONT FORK 47 mm

## CRF 250 09 / KXF 250 09-10 / RMZ 250 09-12 / RMZ 450 09-12

### - PISTON ROD



N	REFERENCE	NAME PART	QTY	09 CRF 250	09 KXF 250	10 KXF 250	11-12 KXF 250	09 RMZ 250	10-12 RMZ 250	09 RMZ 450	10-12 RMZ 450
1	F12041001	PISTON ROD COMP	2	✓							
	F12040801		2				✓				
	F12041502		2		✓						
	F12041003		2			✓					
	F12040001		2					✓			
	F12040002		2						✓		✓
	F12040003		2							✓	
2	F30140501	ROD PIPE L=405.5 mm Ø12.5mm	2	✓	✓	✓					
	F30140801	ROD PIPE L=408mm Ø12.5mm	2				✓				
	F30140001	ROD PIPE L=400 mm Ø12.5mm	2					✓	✓	✓	✓
3	F29900002	PUSH ROD	2	✓	✓	✓	✓				
	F29900004		2					✓	✓	✓	✓
4	F27800002	ROD END	2	✓	✓	✓					
	F27800008		2					✓	✓	✓	✓
	F27800013		2				✓				
5	F24022502	PISTON	2	✓							
	F24000001		2		✓						
	F24022503		2			✓					
	F24027501		2				✓				
	F24022501		2					✓	✓	✓	✓
6	F55100601	NUT	2	✓	✓	✓	✓	✓	✓	✓	
7	F25002301	PISTON RING	2	✓	✓	✓		✓	✓	✓	✓
	F25002801		2				✓				
8	F27600001	SLIDE BUSH	2	✓	✓	✓		✓	✓	✓	
9	F34512501	PACKING					✓				
	F34512502		2	✓	✓	✓		✓	✓	✓	✓
10	F34000019	O RING					✓				
	F34000018		2	✓	✓	✓		✓	✓	✓	✓



## FRONT FORK 47 mm

## CRF 250 09 / KXF 250 09-10 / RMZ 250 09-12 / RMZ 450 09-12

- OIL LOCK
- FORK BOLT



N	REFERENCE	NAME PART	QTY	09 CRF 250	09-10 KXF 250	11 KXF 250	12 KXF 250	09-12 RMZ 250	09-12 RMZ 450
1	F27500001	GUIDE BUSH	2	✓	✓	✓	✓	✓	✓
2	F20900002	OIL LOCK VALVE	2	✓					
	F20900004				✓	✓	✓		
	F20900001								✓
3	F36800002	STOPPER RING C	2		✓			✓	✓
	F36800002		2			✓	✓		
4	F38500002	REB. SPG K=8.4N L=21.4mm	2			✓			
	F38500003	REB. SPG K=8.4N L=21.4mm	2			✓			
	F38500004	REB. SPG K=8.4N L=21.4mm	2				✓		
	F38500005	REB. SPG K=8.4N L=21.4mm	2				✓		
	F38500008	REB. SPG K=8.4N L=21.4mm	2	✓		✓	✓	✓	✓



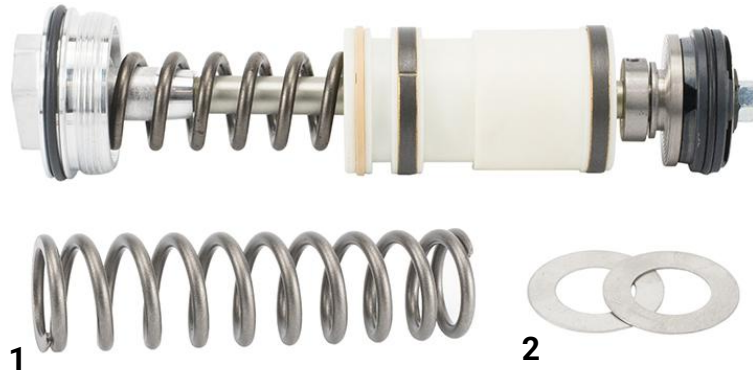
N	REFERENCE	NAME PART	QTY	09 CRF 250	09-10 KXF 250	11-12 KXF 250	09-12 RMZ 250	09-12 RMZ 450
1	F15600010	FORK BOLT COMP	1	✓				
	F15600004		1			✓		
	F15600016		1				✓	✓
2	F45000010	FORK BOLT	1	✓	✓	✓	✓	✓
	F45000002		1		✓	✓		
3	F83910001	SHAFT	1	✓		✓		
	F83910002		1		✓	✓	✓	✓
4	F34000006	O RING	2	✓	✓	✓	✓	✓
5	F45300001	PLUG BOLT	2	✓	✓	✓	✓	✓
6	F34000017	O RING	2	✓	✓	✓	✓	✓
7	F20600001	BALL	2	✓	✓	✓	✓	✓



FRONT FORK 47 mm

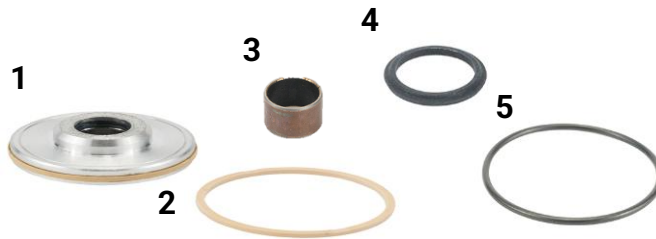
CRF 250 09 / KXF 250 09-10 / RMZ 250 09-12 / RMZ 450 09-12

- FREE PISTON



N	REFERENCE	NAME PART	QTY	09 CRF 250	09-10 KXF 250	09-12 RMZ 250	09-12 RMZ 450
1	F38100005	SPG B K=17,6 N/mm L=100mm	2		✓		
	F38100006	SPG B K=19 N/mm L=100mm	2			✓	✓
	F38100002	SPG B K=17,3 N/mm L=100mm	2	✓			
2	F57700001	STOPPER RING	2	✓	✓	✓	✓

N	REFERENCE	NAME PART	QTY	11-12 KXF 250
1	F38100009	SPG B K=23.4 N/mm L=99 mm	1	✓
2	F57700001	SLAST WASHER	2	✓
-	F36800002	STOPPER RING B	1	✓
-	F75000001	SLAST LACE	1	✓
-	F34000014	O RING	1	✓



N	REFERENCE	NAME PART	QTY	09 CRF 250
1	F86000001	FREE PISTON COMP	2	✓
2	F25003401	PISTON RING	2	✓
3	FH7500001	GUIDE BUSH B	2	✓
4	FK4501002	PACKING B	2	✓
5	F34000012	O RING	2	✓



FRONT FORK 47 mm

CRF 250 09 / KXF 250 09-10 / RMZ 250 09-12 / RMZ 450 09-12

- FREE PISTON



N	REFERENCE	NAME PART	QTY	09-10 KXF 250	11-12 KXF 250	09-12 RMZ 250	09-12 RMZ 450
1	F36600002	STOPPER RING	1	✓		✓	✓
	F36800002		1		✓		
2	FK7433401	SLID BUSH C	2	✓	✓	✓	✓
3	F34000015	O RING	2	✓	✓	✓	✓
4	F32201001	GAS SEAL	2	✓	✓	✓	✓
5	F86000005	FREE PISTON COMP	2	✓	✓	✓	✓



N	REFERENCE	NAME PART	QTY	09 CRF 250	09-10 KXF 250	11-12 KXF 250	09 RMZ 250	10-12 RMZ 250	09 RMZ 450	10-12 RMZ 450	
1	F27A00002	ROD END B	1		✓	✓					
	F27A00012		1				✓	✓		✓	
	F27A00013		1						✓		
	F27A00014		1	✓							
2	F55100601	NUT,HEX	2	✓	✓	✓	✓	✓	✓		
3	FL4000003	L PISTON	1	✓				✓		✓	
	FL4000001		1		✓	✓	✓		✓		
4	F34000004	O RING	1	✓	✓	✓	✓	✓	✓		
5	F25002801	PISTON RING	1			✓					
	F25002301		1	✓	✓		✓	✓	✓	✓	



FRONT FORK 47 mm

CRF 250 09 / KXF 250 09-10 / RMZ 250 09-12 / RMZ 450 09-12

- CENTER BOLT
- SPRING



N	REFERENCE	NAME PART	QTY	09	09-12	09-12	09-12
				CRF 250	KXF 250	RMZ 250	RMZ 450
1	F34000001	O RING	2	✓	✓	✓	✓
2	F41000001	LOCK NUT	2	✓	✓	✓	✓
3	FB2600003	CENTER BOLT COMP	2	✓	✓	✓	✓



1

N	REFERENCE	NAME PART	QTY	09	09-10	11-12	09	10	11-12	09	10	11-12
				CRF 250	KXF 250	KXF 250	RMZ 250	RMZ 250	RMZ 250	RMZ 450	RMZ 450	RMZ 450
1	F38004402	SPRING K=4,4 N/mm L=494	2				✓					
	F38004501	SPRING K=4,5 N/mm L=495	2		✓							
	F38004602	SPRING K=4,6 N/mm L=494	2	✓								
	F38004702	SPRING K=4,7 N/mm L=495	2					✓		✓		
	F38004802	SPRING K=4,7 N/mm L=496	2								✓	
	F38004701	SPRING K=4,61 N/mm L=495	2						✓			
	F38004801	SPRING K=4,71 N/mm L=494	2									✓
	F38009101	SPRING K=9,9N/mm L=740mm	2			✓						



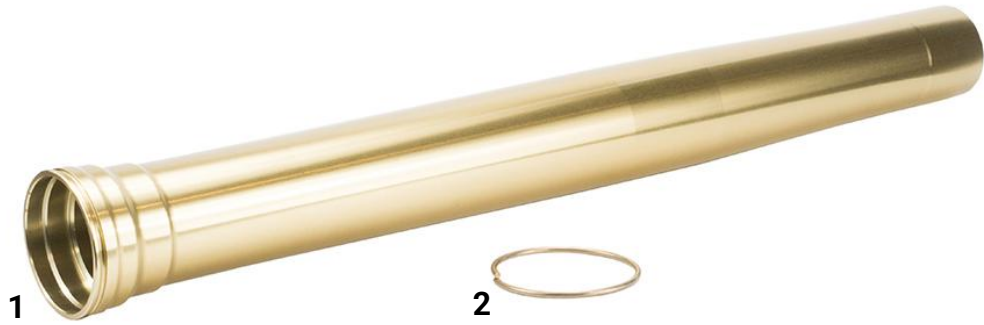
N	REFERENCE	NAME PART	QTY	11-12 KXF 250
1	F12A00001	TENSION ROD COMP	1	✓
2	F25002001	PISTON RING	1	✓
3	FB2600002	CENTER BOLT COMP	1	✓
-	F75300001	SLAST PLATE	1	✓
-	FR3700001	THRUST WASHER STOPPER RING	1	✓



## FRONT FORK 48 mm

CRF 250 10-14

- OUTERTUBE
- SLIDPIPE
- STOPPER RING



N	REFERENCE	NAME PART	QTY	10-14 CRF 250
1	FJ6557101	OUTER TUBE	2	✓
2	F36600001	STOPPER RING	2	✓



N	REFERENCE	NAME PART	QTY	10 CRF 250	11-12 CRF 250	13-14 CRF 250
1	F30504801	R SLIDE PIPE Ø48 L=590mm	2	✓	✓	✓



- BUSH
- SEAL



N	REFERENCE	NAME PART	QTY	10 CRF 250	11-12 CRF 250	13-14 CRF 250
1	F27604801	SLIDE BUSH	2	✓	✓	✓
2	F27504801	GUIDE BUSH	2	✓	✓	✓
3	F35300001	SEAL SPACER	2	✓		
	F35300002		2		✓	✓
4	F32004801	OIL SEAL	2	✓	✓	✓
5	F36500001	OIL SEAL STOPPER RING	2	✓	✓	✓
6	F33004801	DUST SEAL	2	✓	✓	✓



- PISTON ROD



N	REFERENCE	NAME PART	QTY	10 CRF 250	11-14 CRF 250
1	F12039601	PISTON ROD COMP	2	✓	
	F12039602		2		✓
2	F30139601	ROD PIPE L=396mm Ø12.5mm	2	✓	
	F30139602	ROD PIPE L=396mm Ø12.5mm	2		✓
3	F29900003	PUSH ROD	2	✓	✓
4	F27800014	ROD END	2	✓	
	F27800001		2		✓
5	F24002301	PISTON	2	✓	✓
6	F55100601	NUT	2	✓	✓
7	F25002401	PISTON RING	2	✓	✓
8	F27512001	GUIDE BUSH	2	✓	
	F27512501		2		✓
9	F34512501	PACKING	2	✓	✓
10	F35201801	BACK UP RING	2	✓	✓
11	F51300002	ADJUST BOLT	1		✓
12	F34000003	O RING	2	✓	✓
	F34000013		1		✓



- FORK BOLT



N	REFERENCE	NAME PART	QTY	10 CRF 250	11-14 CRF 250
1	F15600008	FORK BOLT COMP	2	✓	
	F15600002	FORK BOLT COMP	2		✓
2	F45000005	FORK BOLT	2	✓	
	F45000001	FORK BOLT	2		✓
3	F83900001	SHAFT	2	✓	
	F83912701	SHAFT	2		✓
4	F34000007	O RING FORK BOLT TOP	2	✓	✓
	F34000005	O RING FORK BOLT INSIDE	2	✓	
5	F45300002	PLUG BOLT LONG	2	✓	
6	F34000013	O RING	2	✓	
5	F45300004	PLUG BOLT GOLD	2	✓	
6	F34000017	O RING	2	✓	
5	F45300003	PLUG BOLT	2		✓
6	F34000017	O RING	2		✓



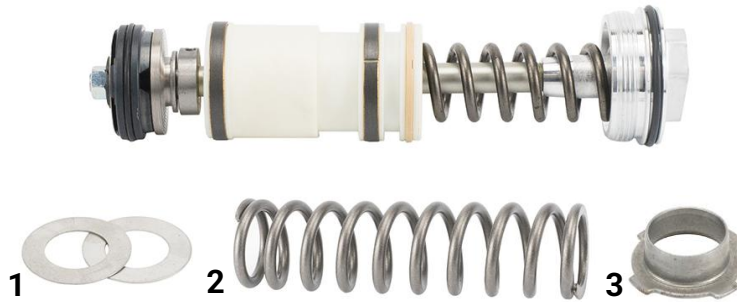
## FRONT FORK 48 mm

CRF 250 10-14

- OIL LOCK
- FREE PISTON



N	REFERENCE	NAME PART	QTY	10-14 CRF 250
1	F20900003	OIL LOCK VALVE	2	✓
2	F36800002	STOPPER RING C	2	✓
3	F38500001	REB SPG K=0.7N/mm L=19mm	2	✓



N	REFERENCE	NAME PART	QTY	10 CRF 250	11-14 CRF 250
1	F57700001	SLAST WASHER	2		✓
2	F38100003	SPG B K=21.5N/mm L=105mm	2	✓	
	F38100004	SPG B K=20.5N/mm L=96mm	2		✓
3	F40000001	SPG GUIDE	4	✓	
	F40000001		2		✓



- FREE PISTON



N	REFERENCE	NAME PART	QTY	10 CRF 250	11-12 CRF 250	13-14 CRF 250
1	F86000002	FREE PISTON COMP	2	✓		
	F86000003		2		✓	
	F86000004		2			✓
3	FK4501001	PACKING B	2	✓	✓	✓
4	F34000010	O RING	1		✓	✓
	F34000016		4	✓		
5	F25003801	PISTON RING	1		✓	✓
	FS7700001	BACKUP RING B	2	✓		
6	FK7436901	SLIDE BUSH C	2	✓		
	FK7437601		4		✓	✓
	FK7333501		2	✓		



- FREE PISTON



N	REFERENCE	NAME PART	QTY	10 CRF 250	11-12 CRF 250	13-14 CRF 250
1	F27A00015	ROD END B	2	✓		
	F27A00001		2		✓	✓
2	F55100601	NUT,HEX	2	✓	✓	✓
3	FL4000002	L PISTON	2	✓	✓	
	FL4000004		2			✓
4	F34000021	O RING	2	✓	✓	
	F34000011		2			✓
5	F25002401	PISTON RING	2	✓	✓	✓
-	F18000002	ADJUST ROD COMP.	2		✓	✓



## FRONT FORK 48 mm

CRF 250 10-14

- CENTER BOLT
- SPRING



N	REFERENCE	NAME PART	QTY	10-14 CRF 250
1	F34000002	O RING	2	✓
2	F41000001	LOCK NUT	2	✓
3	FB2600001	CENTER BOLT COMP	2	✓



N	REFERENCE	NAME PART	QTY	10-12 CRF 250	13-14 CRF 250
1	F38004201	SPRING K=4.2N/mm L=460mm	2		
	F38004401	SPRING K=4.4N/mm L=460mm	2	✓	
	F38004601	SPRING K=4.6N/mm L=460mm	2		✓



FRONT FORK SFF 48 mm

KXF 250 13-18 / RMZ 250 13-15 / RMZ 450 13-14

- OUTERTUBE
- SLIDEPIPE
- STOPPER RING



N	REFERENCE	NAME PART	QTY	13-14	15-19	13-15	13-14
				KXF 250	KXF 250	RMZ 250	RMZ 450
1	FJ6556501	OUTER TUBE	2	✓			
	FJ6556504		2		✓		
	FJ6556503		2			✓	
	FJ6556502		2				✓
2	F36600003	STOPPER RING	2	✓	✓		
	F36600001		2			✓	✓



N	REFERENCE	NAME PART	QTY	13-14	15-16	17-19	13-15	13-14
				KXF 250	KXF 250	KXF 250	RMZ 250	RMZ 450
1	F30604801	L SLIDE PIPE Ø48 L=600mm	1	✓	✓			
	F30604803	L SLIDE PIPE Ø48	1			✓		
	F30504806	R SLIDE PIPE Ø48	1			✓		
	F30504805	R SLIDE PIPE Ø48 L=595mm	1				✓	
	F30604802	L SLIDE PIPE Ø48 L=595mm	2				✓	✓
	F30504804	R SLIDE PIPE Ø48 L=595mm	1					✓



FRONT FORK SFF 48 mm

KXF 250 13-18 / RMZ 250 13-15 / RMZ 450 13-14

- BUSH
- SEAL



N	REFERENCE	NAME PART	QTY	13-19	13-15	13-14
				KXF 250	RMZ 250	RMZ 450
1	F27604801	SLIDE BUSH	2	✓	✓	✓
2	F27504801	GUIDE BUSH	2	✓	✓	✓
3	F35300002	SEAL SPASER	2	✓	✓	✓
4	F32004802	OIL SEAL	2	✓	✓	✓
5	F36500001	OIL SEAL STOPPER RING	2	✓	✓	✓
6	F33004802	DUST SEAL	2	✓	✓	✓



- PISTON ROD



N	REFERENCE	NAME PART	QTY	13-16	17-19	13-15	13-14
				KXF 250	KXF 250	RMZ 250	RMZ 450
1	F12039001	PISTON ROD COMP	1	✓		✓	✓
	F12000006		1		✓		
2	F30139001	ROD PIPE L=390mmØ12.5mm	1	✓	✓	✓	✓
3	F29900005	PUSH ROD	1	✓	✓	✓	✓
4	F27800004	ROD END	1	✓	✓		
	F27800005		1			✓	✓
5	F24003001	PISTON	1	✓		✓	✓
	F24003002		1		✓		
6	F55100601	NUT	1	✓	✓	✓	✓
7	F25003001	PISTON RING	1	✓	✓	✓	✓
9	F34512501	PACKING	1	✓	✓	✓	✓
10	F35201801	BACK UP RING	1	✓	✓	✓	✓
11	F51300002	ADJUST BOLT	1	✓	✓	✓	✓
12	F34000020	O RING	1	✓	✓	✓	✓
			1	✓	✓	✓	✓
13	F34000013		1	✓	✓	✓	



## FRONT FORK SFF 48 mm

KXF 250 13-18 / RMZ 250 13-15 / RMZ 450 13-14

- OIL LOCK
- FORK BOLT



N	REFERENCE	NAME PART	QTY	13-16	17-19	13-15	13-14
				KXF 250	KXF 250	RMZ 250	RMZ 450
1	FH7500002	GUIDE BUSH B	2	✓	✓		
2	F20900005	OIL LOCK VALVE	1	✓			
	F20900006		1			✓	✓
	F20900007		1		✓		
3	F38500006	REB. SPG. K=37.5N/mm SFFside	1	✓	✓	✓	✓
	F38500007	REB. SPG. K=47.1N/mm FF side	1	✓	✓	✓	✓



N	REFERENCE	NAME PART	QTY	13-14	15-16	17-19	13-15	13-14
				KXF 250	KXF 250	KXF 250	RMZ 250	RMZ 450
1	F15600013	FORK BOLT COMP	1	✓				
	F15600014		1		✓			
	F15600003		1				✓	✓
2	F45000003	FORK BOLT	1	✓				
	F45000007		1		✓			
	F45000014		1			✓		
	F45000004		1				✓	✓
3	F83912901	SHAFT	1	✓	✓	✓	✓	
4	F34000017	O RING	2	✓	✓	✓	✓	
5	F45300003	PLUG BOLT	2	✓	✓	✓	✓	
6	F34000007	O RING	2	✓	✓	✓	✓	



FRONT FORK SFF 48 mm

KXF 250 13-18 / RMZ 250 13-15 / RMZ 450 13-14

- FREE PISTON



N	REFERENCE	NAME PART	QTY	13-14	15-16	17-19	13-15
				KXF 250	KXF 250	KXF 250	RMZ 250
1	F38100010	SPG K=27.9 N/mm L=99	1	✓	✓		✓
	F38100009	SPG K=23.4 N/mm L=99	1			✓	
	F38100014	SPG B K=34,7 N/mm L=99	1				
2	F57700001	SLAST WASHER	1	✓	✓	✓	✓



N	REFERENCE	NAME PART	QTY	13-19	13-15	13-14
				KXF 250	RMZ 250	RMZ 450
1	F40000002	SPG GUIDE	1	✓	✓	✓
-	F18621701	SPG COLLAR COMP	1	✓		
-	F18621201		1		✓	✓



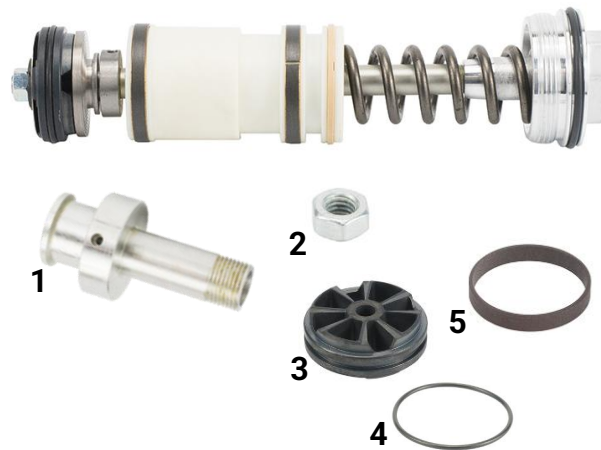
FRONT FORK SFF 48 mm

KXF 250 13-18 / RMZ 250 13-15 / RMZ 450 13-14

- FREE PISTON



N	REFERENCE	NAME PART	QTY	13-19	13-15	13-14
				KXF 250	RMZ 250	RMZ 450
1	F86000006	FREE PISTON COMP	1	✓	✓	✓
3	FK4501001	PACKING B	1	✓	✓	✓
4	F34000010	O RING	1	✓	✓	✓
5	F25003801	PISTON RING	1	✓	✓	✓
6	FK7437601	SLIDE BUSH C	4	✓	✓	✓



N	REFERENCE	NAME PART	QTY	13-19	13-15	13-14
				KXF 250	RMZ 250	RMZ 450
1	F27A00003	ROD END B	1	✓		
	F27A00004		1		✓	✓
2	F55100601	NUT,HEX	1	✓	✓	✓
3	FL4000002	L PISTON	1	✓	✓	✓
4	F34000021	O RING	1	✓	✓	✓
5	F25003001	PISTON RING	1	✓	✓	✓
-	F18000002	ADJUST ROD COMP.	1	✓	✓	✓



## FRONT FORK SFF 48 mm

KXF 250 13-18 / RMZ 250 13-15 / RMZ 450 13-14

- CENTER BOLT
- SPRING



N	REFERENCE	NAME PART	QTY	13-19	13-15	13-14
				KXF 250	RMZ 250	RMZ 450
1	F34000002	O RING	2	✓	✓	✓
2	F41000001	LOCK NUT	2	✓	✓	✓
3	FB2600001	CENTER BOLT COMP	1	✓	✓	✓



N	REFERENCE	NAME PART	QTY	13-14	15-16	17	18-19	13-15	13-14
				KXF 250	KXF 250	KXF 250	KXF 250	RMZ 250	RMZ 450
1	F38009401	SPRING K=9,4 N/mm L=660	1	✓			✓		
	F38009001	SPRING K=9,0 N/mm L=660	1						
	F38009801	SPRING K=9,8 N/mm L=660	1			✓			
	F38009601	SPRING K=9,6 N/mm L=660	1		✓				
	F38009201	SPRING K=9,2 N/mm L=660	1						
	F38010001	SPRING K=10,0 N/mm L=660	1						
	F38009802	SPRING K=9,8 N/mm L=660	1					✓	✓
	F38009402	SPRING K=9,4 N/mm L=660	1						
	F38010201	SPRING K=10,2 N/mm L=660	1						



FRONT FORK SFF 48 mm

KXF 250 13-18 / RMZ 250 13-15 / RMZ 450 13-14

- PISTON ROD



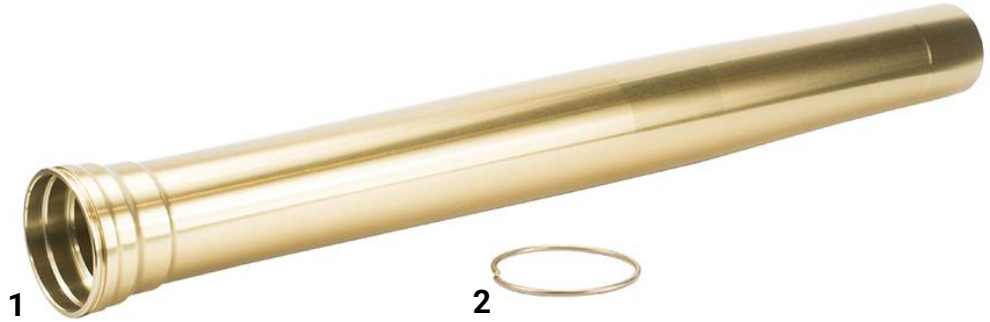
N	REFERENCE	NAME PART	QTY	13-14	15-19	13-15	13-14
				KXF 250	KXF 250	RMZ 250	RMZ 450
1	F12A00007	TENSION ROD COMP	1	✓	✓	✓	✓
2	F25002301	PISTON RING	1	✓	✓	✓	✓
3	FG1500001	CENTER BOLT	1	✓		✓	✓
	FG1500002		1		✓		
4	F27800003	ROD END	1	✓	✓	✓	✓
5	F34000002	O RING	1	✓	✓	✓	✓



## FRONT FORK SFF 49 mm

CRF 250 15-17 / KXF 450 15-18 / RMZ 450 15-17

- OUTERTUBE
- SLIDEPIPE
- AXLEHOLDER



N	REFERENCE	NAME PART	QTY	15	16-17	15-16	17-18	15-17
				CRF 250	CRF 250	KXF 450	KXF 450	RMZ 450
1	FJ6500001	OUTER TUBE	2	✓		✓		
	FJ6500003						✓	
	FJ6500004		2		✓			
	FJ6500005					✓		
2	F36600004	STOPPER RING	2	✓	✓	✓	✓	✓



N	REFERENCE	NAME PART	QTY	15	16-17	15	16	17-18	15-17
				CRF 250	CRF 250	KXF 450	KXF 450	KXF 450	RMZ 450
1	F30504901	R SLIDE PIPE Ø49 L=595mm	2	✓					
	F30504902	R SLIDE PIPE Ø49 L=600mm	2			✓			
	F30504903	R SLIDE PIPE Ø49	2						✓
	F30504904		2		✓				
	F30504905		2				✓	✓	
2	F44904901	R AXLE HOLDER	1	✓	✓				
	F44904902		1			✓	✓	✓	
	F44904903		1						✓
3	F44804901	L AXLE HOLDER	1	✓	✓				
	F44804902		1			✓	✓	✓	
	F44804903		1						✓



FRONT FORK SFF 49 mm

CRF 250 15-17 / KXF 450 15-18 / RMZ 450 15-17

- BUSH
- SEAL



N	REFERENCE	NAME PART	QTY	15-17	15-18	15-17
				CRF 250	KXF 450	RMZ 450
1	F27604901	SLIDE BUSH	2	✓	✓	✓
2	F27504901	GUIDE BUSH	2	✓	✓	✓
3	F35300005	SEAL SPACER	2	✓		
	F35300006		2		✓	✓
4	F32004901	OIL SEAL	2	✓	✓	✓
5	F36500003	OIL SEAL STOPPER RING	2	✓	✓	✓
6	F33004901	DUST SEAL	2		✓	
	F33004902		2			✓
	F33004903		2	✓		



FRONT FORK SFF 49 mm

CRF 250 15-17 / KXF 450 15-18 / RMZ 450 15-17

- REBOUND SPRING



N	REFERENCE	NAME PART	QTY	15-17	15	16	17-18	15-17
				CRF 250	KXF 450	KXF 450	KXF 450	RMZ 450
1	F39000001	REB.SPG.B K=127N/mm L=23.9mm	1	✓	✓			✓
	F39000002	REB SPG B K=91N/mm L=31.4mm	1	✓		✓		
	F39000003	REB SPG B K=87.3N/mm L=31.4mm	1				✓	
	F38500009	REB.SPG. K=67N/mm L=17.4mm	1		✓			✓
	F38500010	REB SPG K=140N/mm L=23.1 mm	1			✓		
	F38500012	REB SPG K=138N/mm L=23 mm	1				✓	



- PISTON ROD



N	REFERENCE	NAME PART	QTY	15 CRF 250	16-17 CRF 250	15 KXF 450	16 KXF 450	17-18 KXF 450	15-17 RMZ 450
1	F12000001	PISTON ROD COMP	1	✓					
	F12000002				✓				
	F12000003							✓	
	F12000004					✓			
	F12000005		1		✓				
	F12000008							✓	
2	F30100001	ROD PIPE L=395 mm 14mm				✓	✓		✓
	F30100002	ROD PIPE L=390mm Ø14mm	1	✓	✓			✓	
	F30100003	ROD PIPE							
3	F29900005	PUSH ROD				✓	✓		✓
	F29900006		1	✓	✓				
	F29900007							✓	



FRONT FORK SFF 49 mm

CRF 250 15-17 / KXF 450 15-18 / RMZ 450 15-17

- ROD



N	REFERENCE	NAME PART	QTY	15	16-17	15	16	17-18	15-17
				CRF 250	CRF 250	KXF 450	KXF 450	KXF 450	RMZ 450
1	F27800006	ROD END	1						✓
	F27800007		1	✓		✓			
	F27800009		1		✓				
	F27800010		1				✓		
	F27800012		1					✓	
2	F24003002	PISTON	1			✓		✓	✓
	F24003003		1	✓					
	F24003004		1		✓				
3	F55100801	NUT,HEX	1					✓	
	F55100601		1	✓	✓	✓	✓		✓
4	F25003001	PISTON RING	2	✓	✓				
5	FH7500003	GUIDE BUSH B	2	✓	✓	✓	✓	✓	✓
6	FE9300001	ROD PACKING	1	✓	✓	✓			✓
	FE9300002		1		✓		✓	✓	
7	FS0000001	BACK UP RING C	1	✓	✓	✓			✓
8	F51300003	ADJUSTER	1	✓	✓	✓	✓	✓	✓
9	F34000020	O RING	2	✓					
	F34000020		1		✓	✓	✓	✓	✓
10	F34000023		1	✓	✓	✓	✓	✓	✓
11	F20900005	OIL LOCK VALVE	1	✓					
	F20900006		1		✓		✓	✓	



FRONT FORK SFF 49 mm

CRF 250 15-17 / KXF 450 15-18 / RMZ 450 15-17

- FORK BOLT



N	REFERENCE	NAME PART	QTY	15 CRF 250	16-17 CRF 250	15 KXF 450	16 KXF 450	17-18 KXF 450	15-17 RMZ 450
1	F15600005	FORK BOLT COMP	1						✓
	F15600015						✓		
	F15600006		1			✓			
	F15600007		1	✓					
	F15600011		1		✓				
	F15600012		1				✓		
2	F45000006	FORK BOLT	1	✓	✓				
	F45000008		1			✓	✓		
	F45000009		1						✓
	F45000015		1					✓	
3	F83900002	SHAFT	1	✓		✓	✓		✓
	F83900003		1		✓				
	F83900004		1					✓	



FRONT FORK SFF 49 mm

CRF 250 15-17 / KXF 450 15-18 / RMZ 450 15-17

- FREE PISTON



N	REFERENCE	NAME PART	QTY	15	16-17	15	16	17-18	15-17
				CRF 250	CRF 250	KXF 450	KXF 450	KXF 450	RMZ 450
1	F38100014	SPG B K=34.7N/mm L=99mm	1						✓
	F38100015	SPG B K=22.8N/mm L=100mm	1	✓					
	F38100016	SPG B K=28N/mm L=100 mm	1			✓	✓	✓	
	F38100017	SPG B K=32N/mm L=100mm	1		✓				
2	F27A00005	ROD END B	1	✓	✓				
	F27A00006		1			✓	✓		
	F27A00007		1						✓
	F27A00009		1					✓	
3	F55100801	NUT,HEX	1					✓	
	F55101201		1	✓	✓	✓	✓		✓
4	FL4000005	PISTON L	1	✓	✓	✓	✓		✓
	FL4000006		1					✓	
5	F34000029	O RING	1	✓	✓	✓	✓		✓
	F34000035		1					✓	
6	F34000026		1	✓	✓	✓	✓	✓	
7	F45300001	PLUG BOLT	1	✓	✓	✓	✓	✓	
8	F34000017	O RING	1	✓	✓	✓	✓	✓	
9	F51000001	SHAFT NUT	1			✓	✓	✓	
10	F38700001	SET SPRING	1	✓	✓	✓	✓	✓	✓
11	F20600001	BALL	1	✓	✓	✓	✓	✓	✓
-	FK5000001	ADJUSTER ROD B	1	✓	✓	✓	✓	✓	✓



FRONT FORK SFF 49 mm

CRF 250 15-17 / KXF 450 15-18 / RMZ 450 15-17

- FREE PISTON



N	REFERENCE	NAME PART	QTY	15	16-17	15	16	17-18	15-17
				CRF 250	CRF 250	KXF 450	KXF 450	KXF 450	RMZ 450
1	F86000007	FREE PISTON COMP	1	✓					
	F86000008		1		✓	✓	✓		✓
	F86000009							✓	
3	F32200001	GAS SEAL						✓	
	FK4500001	PACKING B	1	✓	✓	✓	✓		✓
4	F34000025	O RING	1	✓	✓	✓	✓		✓
	F34000012							✓	
5	F25200001	PISTON RING B	1	✓	✓	✓	✓		✓
	F25003401							✓	
6	FK7433601	SLID BUSH C						✓	
	FK7400001		2	✓	✓	✓	✓		✓
-	F36600005	STOPPER RING						✓	
-	F35300008	SEAL SPACER	2					✓	



FRONT FORK SFF 49 mm

CRF 250 15-17 / KXF 450 15-18 / RMZ 450 15-17

- CENTER BOLT
- SPRING



N	REFERENCE	NAME PART	QTY	15	16-17	15	16	17-18	15-17
				CRF 250	CRF 250	KXF 450	KXF 450	KXF 450	RMZ 450
1	F34000028	O RING	1	✓	✓	✓	✓	✓	✓
2	F41000002	LOCK NUT	2	✓	✓	✓	✓	✓	✓
3	FB2600004	CENTER BOLT COMP	1	✓				✓	
	FB2600005				✓	✓		✓	
	FB2600006		1		✓				



N	REFERENCE	NAME PART	QTY	15	16-17	15-18	15-17
				CRF 250	CRF 250	KXF 450	RMZ 450
1	FNGL00001	SEALING BOLT	1	✓	✓		
	FNGL00002		1			✓	✓
2	F34000022	O RING	1	✓	✓	✓	✓
	F34000027		1			✓	✓
3	F41000002	LOCK NUT	1	✓	✓	✓	✓
4	F34000004	O RING	1	✓	✓	✓	✓
5	F45600001	CAP,AIR VALVE	1	✓	✓		
6	F46800001	AIR VALVE CORE	1	✓	✓	✓	✓



FRONT FORK SFF 49 mm

CRF 250 15-17 / KXF 450 15-18 / RMZ 450 15-17

- FORK BOLT COMP



N	REFERENCE	NAME PART	QTY	15-17	15-18	15-17
				CRF 250	KXF 450	RMZ 450
1	F36700002	STOPPER RING B	1	✓	✓	✓
2	F34000034	O RING	2/3	✓	✓	✓
3	F34000030		2/3	✓	✓	✓
4	F34000024		2/3	✓	✓	✓
5	F46700001	AIR VALVE STEM	2/3	✓	✓	✓
6	R46800001	AIR VALVE CORE	2/3	✓	✓	✓
7	F15700001	AIR VALVE CAP COMP	1/2	✓	✓	✓



FRONT FORK SFF 49 mm

CRF 250 15-17 / KXF 450 15-18 / RMZ 450 15-17

- ROD



N	REFERENCE	NAME PART	QTY	15 CRF 250	16-17 CRF 250	15 KXF 450	16 KXF 450	17-18 KXF 450	15-17 RMZ 450
1	F12A00002	TENSION ROD COMP	1			✓			✓
	F12A00003		1	✓					
	F12A00004		1		✓				
	F12A00005		1				✓		
	F12A00006		1					✓	
2	F25003001	PISTON RING	1	✓	✓	✓	✓	✓	✓
3	FYBC00001	PISTON PACKING B	1	✓	✓	✓			✓
	FYBC00002		1		✓		✓		
	FYBC00003		1					✓	
4	FE9100001	PISTON SEAL	1	✓		✓			✓
	FE9100002		1		✓		✓		
	FE9100003		1					✓	



FRONT FORK SFF 49 mm

CRF 250 15-17 / KXF 450 15-18 / RMZ 450 15-17

- ROD



N	REFERENCE	NAME PART	QTY	15 CRF 250	16-17 CRF 250	15 KXF 450	16 KXF 450	17-18 KXF 450	15-17 RMZ 450
1	FP6800001	OIL SEAL CASE B	1	✓		✓			✓
2	F38300001	REBOUND SEAT	1	✓		✓			✓
	F38300002		1		✓	✓			
	F38300003		1					✓	
3	F35400001	OIL SEAL CASE	1	✓		✓			✓
	F35400002		1		✓	✓			
	F35400003		1					✓	
4	F34500003	PACKING	1	✓		✓			✓
5	F34500001		1	✓	✓	✓	✓	✓	✓
6	F34500002		1	✓		✓			✓
7	F34000020	O RING	1/2	✓	✓	✓	✓		✓
	F34000035		1					✓	
-	F27000001	ROD GUIDE	1	✓		✓			✓
-	F27000002		1		✓		✓		
-	F27000004		1					✓	



FRONT FORK SFF 49 mm

CRF 250 15-17 / KXF 450 15-18 / RMZ 450 15-17

- PLUG BOLT AIR



N	REFERENCE	NAME PART	QTY	15	16	17-18	15-17
				KXF 450	KXF 450	KXF 450	RMZ 450
1	FB3200001	PLUG BOLT COMP	1	✓			
	FB3200002		1				✓
	FB3200003		1		✓	✓	
2	F45600002	AIR VALVE CAP	1	✓	✓	✓	✓
3	F34000024	O RING	1	✓	✓	✓	✓
4	F46700001	AIR VALVE STEM	1	✓	✓	✓	✓
5	R46800001	AIR VALVE CORE	1	✓	✓	✓	✓



FRONT FORK 49 mm

CRF 250 18-23 / CRF 450 17-23 / KXF 450 19-23 / RMZ 450 18-23

- OUTERTUBE
- SLIDEPIPE
- AXLEHOLDER



N	REFERENCE	NAME PART	QTY	18-24 CRF 250R	25 CRF 250R	17-23 CRF 450R	24 CRF 450R	25 CRF 450R	19-23 CRF 450WE	24-25 CRF 450WE
1	FJ6500006	OUTER TUBE	2	✓		✓				
	FJ6500008		2							
	FJ6500012		2						✓	
	FJ6500013		2							
	FJ6500015									
	FJ6500018		2							✓
	FJ6500019		2				✓			
	FJ6500021		2		✓			✓		
2	F36600004	STOPPER RING	2	✓	✓	✓	✓	✓	✓	

N	REFERENCE	NAME PART	QTY	25 KXF 250	19-23 KXF 450	24-25 KXF 450	18-25 RMZ 450
1	FJ6500006	OUTER TUBE	2				
	FJ6500008		2			✓	
	FJ6500012		2				
	FJ6500013		2		✓		
	FJ6500015			✓		✓	
	FJ6500018		2				
	FJ6500019		2				
	FJ6500021		2				
2	F36600004	STOPPER RING	2	✓	✓	✓	✓



FRONT FORK 49 mm

CRF 250 18-23 / CRF 450 17-23 / KXF 450 19-23 / RMZ 450 18-23

- Slide pipe
- Axle holder



1

N	REFERENCE	NAME PART	QTY	18-25 CRF 250R	17-25 CRF 450R	19-25 CRF 450WE	25 KXF 250	19-25 KXF 450	18-25 RMZ 450
1	F30504906	R SLIDE PIPE Ø49 L=595 mm CHROME	2	✓	✓	✓	✓	✓	✓
	F30504908	R SLIDE PIPE Ø49 L=595 mm DLC	2	✓	✓	✓	✓	✓	✓
	F30504909	**OPTIONAL PART: EMERALD**	2	✓	✓	✓	✓	✓	✓



N	REFERENCE	NAME PART	QTY	18-26 CRF 250R	17-26 CRF 450R	19-25 CRF 450WE	25-26 KXF 250	23-26 KXF 450
1	F449HON01	WORKS Axle Holder Right CNC Black	1	✓	✓	✓		
	F448HON01	WORKS Axle Holder Left CNC Black	1	✓	✓	✓		
	F448KAW01	WORKS Axle Holder Left CNC Black	1				✓	✓
	F449KAW01	WORKS Axle Holder Right CNC Black	1				✓	✓



## FRONT FORK 49 mm

## CRF 250 18-23 / CRF 450 17-23 / KXF 450 19-23 / RMZ 450 18-23

- BUSH
- SEAL
- REBOUND SPRING



N	REFERENCE	NAME PART	QTY	18 CRF 250R	19-24 CRF 250R	25 CRF 250R	17-18 CRF 450R	19-24 CRF 450R	25 CRF450R	17-18 CRF 450X	19-24 CRF 450WE	25 CRF 450WE
1	F27604901	SLIDE BUSH	2	✓	✓	✓	✓	✓	✓	✓	✓	✓
2	F27504901	GUIDE BUSH	2	✓	✓	✓	✓	✓	✓	✓	✓	✓
3	F35300005	SEAL SPACER	2	✓			✓			✓		
	F35300006		2		✓	✓		✓	✓		✓	✓
4	F32004901	OIL SEAL	2	✓	✓	✓	✓	✓	✓	✓	✓	✓
5	F36500003	OIL SEAL STOPPER RING	2	✓	✓	✓	✓	✓	✓	✓	✓	✓
6	F33004903	DUST SEAL	2	✓	✓		✓	✓		✓	✓	
	F33004901		2			✓			✓			✓

N	REFERENCE	NAME PART	QTY	25 KXF 250	19-25 KXF 450	18-25 RMZ 450
1	F27604901	SLIDE BUSH	2	✓	✓	✓
2	F27504901	GUIDE BUSH	2	✓	✓	✓
3	F35300005	SEAL SPACER	2			
	F35300006		2		✓	✓
4	F32004901	OIL SEAL	2	✓		✓
5	F36500003	OIL SEAL STOPPER RING	2	✓	✓	✓
6	F33004903	DUST SEAL	2			✓
	F33004901		2			



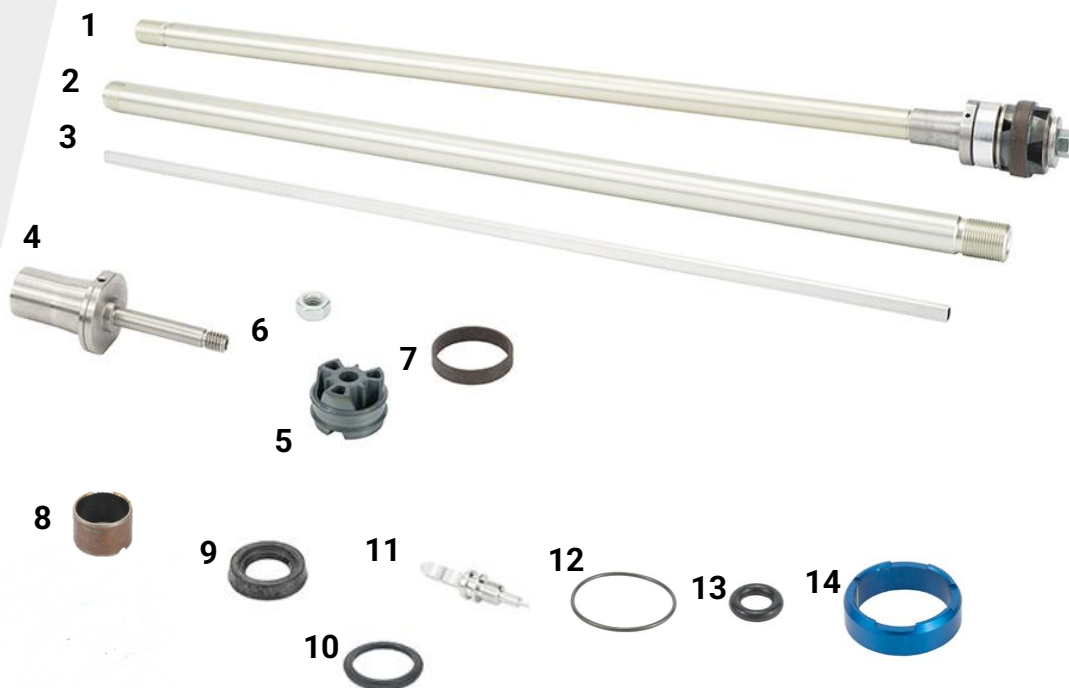
N	REFERENCE	NAME PART	QTY	18-24 CRF 250R	25 CRF 250R	17-20 CRF 450R	21-24 CRF 450R	25 CRF 450R	19-24 CRF 450WE	25 CRF 450WE	25 KXF 250	19-23 KXF 450	24-25 KXF 450	18-25 RMZ 450
1	F38500011	REB.SPG. K=71.5N/mm L=11.8mm	1	✓		✓			✓			✓		✓
	F38500013	REB.SPG. K=75.5N/mm L=15.6mm	1				✓				✓		✓	
	F38500014	Rebound Spring	1		✓			✓		✓				



## FRONT FORK 49 mm

CRF 250 18-23 / CRF 450 17-23 / KXF 450 19-23 / RMZ 450 18-23

### - PISTON ROD



N	REFERENCE	NAME PART	QTY	18 CRF 250R	19-21 CRF 250R	22-24 CRF 250R	25 CRF 250R	17 CRF 450R	18 CRF 40R	19-20 CRF 450R	21-24 CRF 450R	25 CRF 450R	25 KXF 250	19-24 KXF 405	25 KXF 25	18-25 RMZ 450	
1	F12000009	PISTON ROD COMP	2					✓									
	F12000010		2														
	F12000011		2	✓	✓												
	F12000012		2							✓	✓						
	F12000013		2														✓
	F12000015		2												✓		
	F12000016		2			✓						✓					
	F12000017		2				✓						✓				
	F12000018		2											✓			
	F12000019		2													✓	
2	F30100002	ROD PIPE L=390,5MM 14Ø	2	✓	✓			✓	✓	✓				✓		✓	
	F30100005	ROD PIPE L=392,5MM 14Ø	2										✓		✓		
	F30100006	ROD PIPE L=400MM 14Ø	2				✓					✓					
	F30139801	ROD PIPE L=398MM 14Ø	2			✓					✓						
3	F29900006	PUSH ROD	2											✓			
	F29900010		2	✓	✓	✓		✓	✓	✓						✓	
	F29900011		2											✓		✓	
	F29900012		2				✓					✓					
4	F27800011	ROD END	2	✓	✓	✓	✓	✓	✓	✓	✓	✓		✓		✓	
	F27800015		2										✓		✓		
5	F24002501	PISTON	2	✓	✓	✓		✓	✓	✓	✓		✓	✓	✓	✓	
	F24002502		2				✓					✓					
6	F55100601	NUT HEX	2	✓	✓	✓	✓	✓	✓	✓	✓	✓	✓	✓	✓	✓	
7	F25002501	PISTON RING	2	✓	✓	✓	✓	✓	✓	✓	✓	✓	✓	✓	✓	✓	
8	F27501401	GUIDE BUSG B	2	✓	✓	✓	✓	✓	✓	✓	✓	✓	✓	✓	✓	✓	
9	FE9300001	ROD PACKING	2	✓	✓	✓	✓	✓	✓	✓	✓	✓	✓	✓	✓	✓	
10	FS0000001	BACK UP RING C	2	✓	✓	✓	✓	✓	✓	✓	✓	✓	✓	✓	✓	✓	
11	F51300003	ADJUST BOLT	2	✓	✓	✓	✓	✓	✓	✓	✓	✓	✓	✓	✓	✓	
12	F34000023	O RING	2	✓	✓	✓	✓	✓	✓	✓	✓	✓	✓	✓	✓	✓	
	F34000003		2	✓	✓	✓	✓	✓	✓	✓	✓	✓	✓	✓	✓	✓	
14	F20900008	OIL LOCK VALVE	2	✓	✓	✓	✓	✓	✓	✓	✓	✓	✓	✓	✓	✓	



FRONT FORK 49 mm

CRF 250 18-23 / CRF 450 17-23 / KXF 450 19-23 / RMZ 450 18-23

- FORK BOLT
- SHAFT

1



2



N	REFERENCE	NAME PART	QTY	18 CRF 250R	19 CRF 250R	20 CRF 250R	21 CRF 250R	22-25 CRF 250R	17-18 CRF 450R	19 CRF 450R	20 CRF 450R	21 CRF 450R	22-25 CRF 450R	19 CRF 450WE	20 CRF 450WE	25 CRF 250 WE	25 CRF 450 WE		
1	F45000013	FORK BOLT	2	✓					✓										
	F45000016		2																
	F45000022		2																
	F45000023		2		✓														
	F45000024		2							✓									
	F45000025		2											✓					
	F45000026		2			✓													
	F45000027		2									✓							
	F45000028		2																
	F45000029		2													✓			
	F45000033		2						✓				✓	✓					
	F45000034		2					✓									✓		
	F45000035		2																✓
	2		F83900002	SHAFT	2	✓	✓	✓	✓		✓	✓	✓			✓	✓		
			F83900005		2					✓				✓	✓			✓	



FRONT FORK 49 mm

CRF 250 18-23 / CRF 450 17-23 / KXF 450 19-23 / RMZ 450 18-23

- FORK BOLT



N	REFERENCE	NAME PART	QTY	25 KXF 250	19-25 KXF 450	18-25 RMZ 450
1	F45000013	FORK BOLT	2		✓	✓
	F45000016		2			
	F45000022		2	✓	✓	
2	F83900002	SHAFT	2	✓	✓	✓
	F83900005		2			



N	REFERENCE	NAME PART	QTY	17-25 CRF250/450
1	F45000032	FORK BOLT	2	✓



FRONT FORK 49 mm

CRF 250 18-23 / CRF 450 17-23 / KXF 450 19-23 / RMZ 450 18-23

- FORK BOLT



N	REFERENCE	NAME PART	QTY	18 CRF 250R	19 CRF 250R	20-21 CRF 250R	22-24 CRF 250R	25 CRF 250R	17-18 CRF 450R	19 CRF 450R	20 CRF 450R	21-24 CRF 450R	25 CRF 450R	25 KXF 250	19-24 KXF 450	25 KXF 450	18-25 RMZ 450
1	F38100018	SPG B K=22.6N/mm L=100mm	2		✓		✓		✓			✓				✓	
	F38100019	SPG B K=21.5N/mm L=100mm	2	✓		✓								✓			
	F38100020	SPG B K=24.2N/mm L=100mm	2								✓				✓		
	F38100021	SPG B K=23.0N/mm	2							✓							✓
	F38100023	SPG B L108mm K 19N/mm	2					✓					✓				
2	F27A00008	ROD END B	2						✓						✓		
	F27A00011	ROD END B	2	✓	✓												✓
	F27A00015	ROD END B	2														
	F27A00016	ROD END B	2			✓	✓	✓		✓	✓	✓	✓				
	F27A00017	ROD END B	2											✓		✓	
3	F55101201	NUT,HEX	2	✓	✓	✓	✓	✓	✓	✓	✓	✓	✓	✓	✓	✓	✓
	FL4000005	PISTON	2	✓	✓	✓	✓	✓	✓	✓	✓	✓	✓	✓	✓	✓	✓
4	F34000026	O RING	2	✓	✓	✓	✓	✓	✓	✓	✓	✓	✓	✓	✓	✓	✓
	F34000029	O RING	2	✓	✓	✓	✓	✓	✓	✓	✓	✓	✓	✓	✓	✓	✓
7	F45300001	PLUG BOLT	2				✓	✓	✓	✓	✓	✓	✓	✓	✓	✓	✓
	F45300006	PLUG BOLT	2	✓	✓	✓											
8	F34000017	O RING (NEEDLE)	2	✓	✓	✓	✓	✓	✓	✓	✓	✓	✓	✓	✓	✓	✓
	F34000013	O RING	2	✓	✓	✓	✓	✓	✓	✓	✓	✓	✓	✓	✓	✓	✓
9	F51000001	SHAFT NUT	2	✓	✓	✓	✓	✓	✓	✓	✓	✓	✓	✓	✓	✓	✓
10	F20600001	BALL	2	✓	✓	✓	✓	✓	✓	✓	✓	✓	✓	✓	✓	✓	✓



FRONT FORK 49 mm

CRF 250 18-23 / CRF 450 17-23 / KXF 450 19-23 / RMZ 450 18-23

- FREE PISTON



N	REFERENCE	NAME PART	QTY	18-21 CRF 250R	17-18 CRF 450R	19-20 CRF 450R	17-20 CRF 450X	19-20 CRF 450WE	19-22 KXF 450	18-22 RMZ 450
1	F86000007	FREE PISTON COMP	2	✓	✓		✓			
	F86000008	FREE PISTON COMP	2			✓		✓	✓	✓
3	FK4500001	PACKING B	2	✓	✓	✓	✓	✓	✓	✓
4	F34000053	O RING	2							
	F34000025	O RING	2	✓	✓	✓	✓	✓	✓	✓
3	F32200001	GAS SEAL	2							
5	F25200001	PISTON RING B	2	✓	✓	✓	✓	✓	✓	✓
6	FK7400001	SLID BUSH C	4	✓	✓	✓	✓	✓	✓	✓



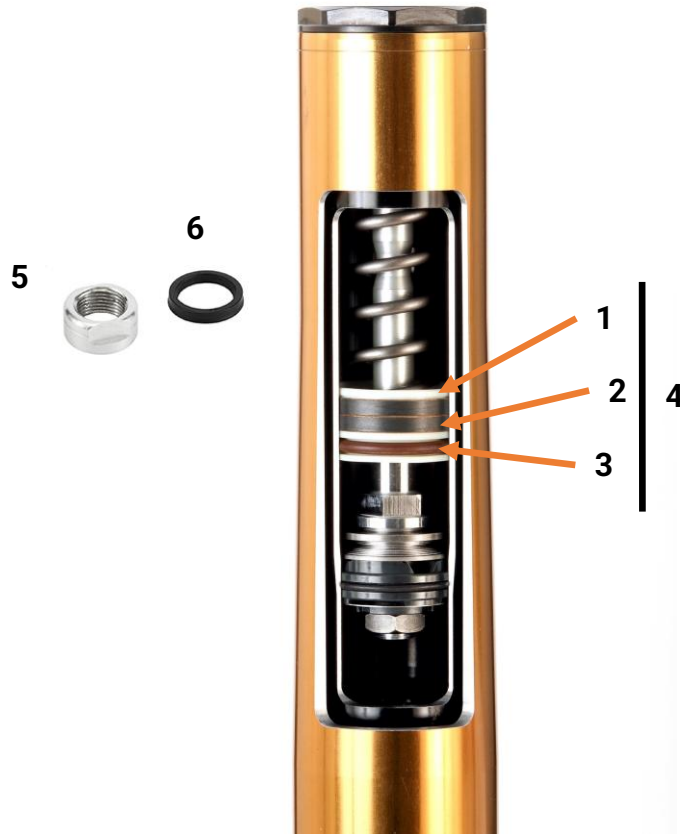
N	REFERENCE	NAME PART	QTY	18-22 CRF 250R	17-22 CRF 450R	17-22 CRF 450X	19-22 CRF 450WE	19-22 KXF 450	18-22 RMZ 450
1	F34000028	O RING	1	✓	✓	✓	✓	✓	✓
2	F41000002	LOCK NUT	2	✓	✓	✓	✓	✓	✓
3	FB2600006	CENTER BOLT COMP	1	✓	✓	✓	✓	✓	✓



FRONT FORK 49 mm

CRF 250 18-23 / CRF 450 17-23 / KXF 450 19-23 / RMZ 450 18-23

- FREE PISTON



N	REFERENCE	NAME PART	QTY	22-23	21-23	21-22
				CRF 250R	CRF 450R	CRF 450WE
1	F29700003	FREE PISTON SINGLE	2	✓	✓	✓
2	FK7400001	SLID BUSH C	2	✓	✓	✓
3	F34000053	O RING	2	✓	✓	✓
4	F86000011	FREE PISTON COMP	2	✓	✓	✓
5	F51000001	SHAFT NUT	2	✓	✓	✓
6	F32200001	GAS SEAL	2	✓	✓	✓
-	F35300008	SEAL SPACER	2	✓	✓	✓
-	F36600005	STOPPER RING	4	✓	✓	✓



FRONT FORK 49 mm

CRF 250 18-23 / CRF 450 17-23 / KXF 450 19-23 / RMZ 450 18-23

- SPRING



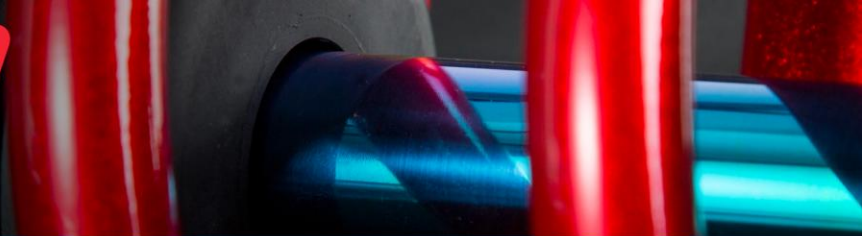
N	REFERENCE	NAME PART	QTY	18 CRF 250R	19-24 CRF 250R	25 CRF 250R	17 CRF 450R	18-24 CRF 450R	25 CRF 450R	19-24 CRF 450WE	25 CRF 450WE	25 KXF 250	19-25 KXF 450	18-25 RMZ 450
	F38004605	SPRING K=4.6N/mm L=472mm	2	✓										
	F38004804	SPRING K=4.8N/mm L=472mm	2		✓		✓							
	F38004805	Spring,Fr.fork 44.6/500/4.8 N/mm	2			✓								
	F38005002	SPRING K=5.0N/mm L=472mm	2					✓		✓		✓	✓	✓
1	F38005003	Spring,Fr.fork 44.6/500/5.0 N/mm	2						✓		✓			

# SHOWA

by GENUINE PARTS EUROPE

## REAR SHOCK PARTS





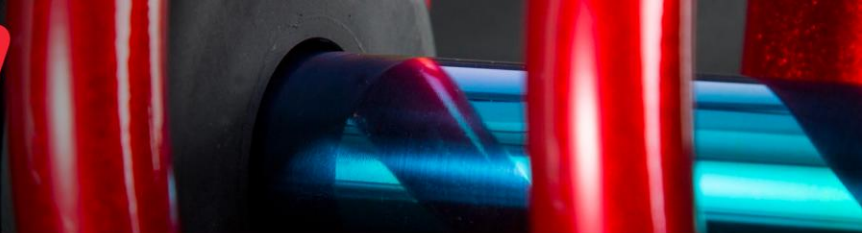
## REAR SHOCK

CRF / KXF / RMZ

### - PISTON



N	REFERENCE	NAME PART	QTY	09-21 CRF 250	22-25 CRF 250	17-21 CRF 450	22-25 CRF 450	09-19 KXF 250	25 KXF 250	15-24 KXF 450	25 KXF 450	09 RMZ 250	10 RMZ 250	11-12 RMZ 250	13-15 RMZ 250	09 RMZ 450	10 RMZ 450	11-12 RMZ 450	13-17 RMZ 450	18-25 RMZ 450		
1	R55101601	NUT,HEX	1										✓	✓	✓		✓	✓	✓			
	R55101401		1	✓	✓	✓	✓	✓	✓	✓	✓	✓					✓					
	R55101201		1																			✓
2	R25005001	PISTON RING	1	✓	✓	✓	✓	✓	✓	✓	✓	✓				✓						
	R25005004		1																			✓
3	R24005001	PISTON	1												✓					✓		
	R24005002		1					✓		✓		✓				✓						
	R24005003		1	✓		✓																
	R24005004		1										✓	✓			✓	✓				
	R24005006		1																			✓
	R24005007		1		✓		✓			✓		✓										
4	R34505001	PACKING	1									✓	✓	✓		✓	✓	✓				
5	R35205001	BUCK UP RING	2									✓				✓						
6	R25005002	PISTON RING	1									✓				✓						
	R25005002		2										✓	✓				✓	✓			
7	R34005001	O RING	2	✓	✓	✓	✓	✓	✓	✓	✓	✓				✓						
	R34000008		2																		✓	



## REAR SHOCK

CRF / KXF / RMZ

- SEAL HEAD
- STOPPER RUBBER



N	REFERENCE	NAME PART	QTY	09 CRF 250	10-25 CRF 250	17-25 CRF 450	19-25 CRF 450VE	09 KXF 250	10-19 KXF 250	25 KXF 250	15 KXF 450	16-25 KXF 450	09-15 RMZ 250	09-17 RMZ 450	18-25 RMZ 450	
1	R26901601	OIL SEAL GUIDE	1	✓	✓	✓	✓	✓	✓	✓	✓	✓			✓	
	R26901801		1										✓	✓		
2	R33001601	DUST SEAL	1	✓	✓	✓	✓	✓	✓	✓	✓	✓			✓	
	R33001801		1										✓	✓		
3	R32001601	OIL SEAL	1	✓	✓	✓	✓	✓	✓	✓	✓	✓			✓	
	R32001801		1										✓	✓		
4	R35201801	BACK UP RING	1										✓	✓		
5	R27501601	GUIDE BUSH	1	✓	✓	✓	✓	✓	✓	✓	✓	✓			✓	
	R27501801		1										✓	✓		
6	R38800001	REBOUND RUBBER	1	✓												
	R38800002		1		✓	✓	✓	✓	✓	✓	✓	✓				
	R38804001		1													✓
7	R34005002	O RING	1	✓	✓	✓	✓	✓	✓	✓	✓	✓	✓	✓	✓	
8	R36600001	STOPPER RING	1	✓	✓	✓	✓	✓	✓	✓	✓	✓	✓	✓	✓	
9	R38502301	REBOUND SPG L=23mm	1	✓												
	R38502302		1		✓	✓	✓	✓					✓	✓		
	R38502701	REBOUND SPG L=27mm	1						✓	✓	✓	✓			✓	
#	R27301601	ROD GUIDE CASE	1					✓	✓		✓					
	R27301602		1	✓	✓	✓	✓			✓		✓				
	R27301801		1											✓	✓	
	R27301603		1													✓
#	R41501601	STOPPER RUBBER	1	✓	✓	✓	✓	✓	✓	✓	✓	✓			✓	
	R41501602		1													
	R41501801		1										✓	✓		



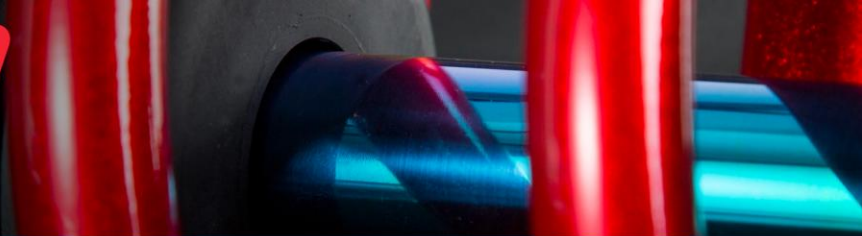
## REAR SHOCK

CRF / KXF / RMZ

- BLADDER
- CHAMBER CAP



N	REFERENCE	NAME PART	QTY	09 CRF 250	10-17 CRF 250	18-21 CRF 250	22-24 CRF 250	25 CRF 250	17-20 CRF 450R	21-24 CRF 450	25 CRF 450	09 KXF 250	10-19 KXF 250	25 KXF 250	15-18 KXF 450	19-24 KXF 450	25 KXF 450	09 RMZ 250	10-15 RMZ 250	09 RMZ 450	10-17 RMZ 450	18-25 RMZ 450		
1	R29606001	BLADDER	1		✓																			
	R29610501		1					✓			✓													
	R29610502		1	✓									✓	✓		✓					✓		✓	
	R29610301		1					✓			✓								✓		✓			
	R29609601		1			✓				✓														
	R29600003		1												✓		✓	✓						✓
2	R45500001	AIR VALVE	1	✓	✓	✓	✓	✓	✓	✓	✓	✓	✓	✓	✓	✓	✓	✓	✓	✓	✓	✓	✓	
3	R46800001	AIR VALVE CORE	1	✓	✓	✓	✓	✓	✓	✓	✓	✓						✓	✓	✓	✓	✓	✓	
4	R15700001	AIR VALVE CAP COMP	1	✓	✓	✓	✓	✓	✓	✓	✓	✓						✓	✓	✓	✓	✓	✓	
6	R36600003	STOPPER RING	1		✓																			
	R36600004		1	✓		✓	✓	✓	✓	✓	✓	✓							✓	✓	✓	✓		
	R36600008		1											✓		✓				✓				
	R36600009		1												✓		✓	✓						✓
5	RB0600001	CHAMBER CAP COMP	1		✓		✓	✓																
	R60700001		1	✓		✓			✓	✓	✓	✓												
	R60700002		1																					✓
	RB0600002		1											✓		✓								
	RB0600003		1																	✓		✓		
	RB0600004		1																		✓			
	RB0600005		1																✓					
	RB0600006		1												✓		✓	✓						



## REAR SHOCK

CRF / KXF / RMZ

### - SPRING ADJ.



N	REFERENCE	NAME PART	QTY	09	10-12	13-25	17-25 CRF	19-25 CRF	25 KXF 25	09-19	15-18	19-25	09-12	13-15	09-12	13-17	18-25
				CRF 250	CRF 250	CRF 250	450	450WE		KXF 250	KXF 450	KXF 450	RMZ 250	RMZ 250	RMZ 450	RMZ 450	RMZ 450
1	RF6300001	SPG ADJ NUT	1	✓									✓		✓		
1	RF6300002	SPG ADJ NUT	1			✓	✓	✓		✓	✓			✓		✓	
1	RF6300003	SPG ADJ NUT	1		✓												
2	R39100001	SPG ADJ	1	✓									✓		✓		
2	R39100002	SPG ADJ	1			✓	✓	✓		✓	✓			✓		✓	
2	R39100003	SPG ADJ	1		✓												
2	R39100006	SPG ADJ	1						✓			✓					✓
3	R39300001	SPG SEAT B	1	✓	✓	✓	✓	✓	✓	✓	✓	✓	✓	✓	✓	✓	✓
3	R39200002	SPG SEAT	1														✓
3	R39200003	SPG SEAT	1						✓			✓					
4	R36800001	STOPPER RING C	1	✓	✓	✓	✓	✓	✓	✓	✓	✓	✓	✓	✓	✓	✓
	R53100001	BAND							✓			✓					✓

## REAR SHOCK

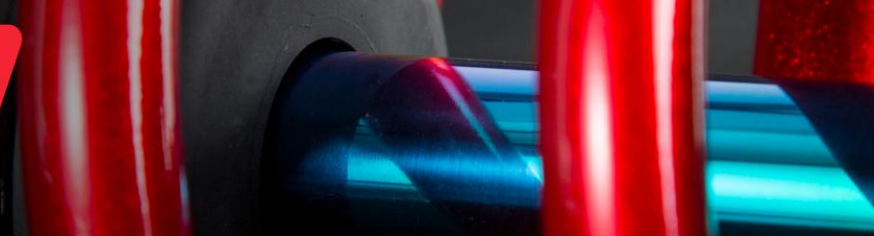
CRF / KXF / RMZ

### - SPRING



1

REFERENCE	NAME PART	QTY	09-13 CRF 250	14 CRF 250	15-24 CRF 250	25 CRF 250	17 CRF 450	18-24 CRF 450	25 CRF 450	09-11 KXF 250	12-16 KXF 250	17-19 KXF 250	25 KXF 250	15 KXF 450	16 KXF 450	17-18 KXF 450	19-23 KXF 450	25 KXF 450	09 RMZ 250	10 RMZ 250	11-12 RMZ 250	13-15 RMZ 250	09 RMZ 450	10 RMZ 450	11-12 RMZ 450	13-16 RMZ 450	17 RMZ 450	18-25 RMZ 450	
R38005305	SPRING 53N/mm	1																		✓									
R38005004	SPRING 50N/mm	1				✓																							
R38005005	SPRING 50N/mm	1							✓																				
R38005501	SPRING 54N/mm	1																											
R38005601	SPRING 55N/mm	1																						✓					
R38005701	SPRING 56N/mm	1																		✓	✓								
R38005801	SPRING 57N/mm	1																						✓	✓				
R38005502	SPRING 54N/mm	1																					✓						
R38005702	SPRING 56N/mm	1																									✓		
R38005302	SPRING 52N/mm	1	✓																										
R38005303	SPRING 52N/mm	1		✓																									
R38005304	SPRING 52N/mm	1			✓																								
R38005403	SPRING 54N/mm	1					✓																						
R38005603	SPRING 56N/mm	1						✓																					
R38005606	SPRING 56N/mm	1											✓					✓											
R38005202	SPRING 51 N/mm	1								✓					✓														
R38005401	SPRING 53N/mm	1									✓			✓															
R38005203	SPRING 52 N/mm	1									✓					✓													
R38005602	SPRING 56N/mm	1																										✓	
R38005402	SPRING 54N/mm	1																✓											✓



## REAR SHOCK

CRF / KXF / RMZ

### - ROD END



N	REFERENCE	NAME PART	QTY	09	10	11-13	14-17	18	19-24	25	17-18	19-24	25	09-11	12-19	25	15	16	17-24	25	09	10-15	09	10-17	18-25	
				CRF 250	CRF 250	CRF 250	CRF 250	CRF 250	CRF 250	CRF 250	CRF 450	CRF 450	CRF 450	KXF 250	KXF 250	KXF 250	KXF 450	KXF 450	KXF 450	KXF 450	RMZ 250	RMZ 250	RMZ 450	RMZ 450	RMZ 450	RMZ 450
1	R12201601	JOINT ROD COMP	1	✓																						
	R12201602		1		✓																					
	R12201603		1			✓																				
	R12201604		1				✓																			
	R12201605		1												✓			✓								
	R12201606		1													✓										
	R12201607		1																✓							
	R12201608		1						✓				✓													
	R12201609		1																		✓					
	R12201611		1																							
	R12201612		1								✓			✓												
	R12201613		1																							
	R12201615		1														✓				✓					
	R12201617		1												✓											
	R12201801		1																				✓			
	R12201802		1																					✓		
R12201803	1																						✓			
RS8000001	ROD CYLINDER COMP	1																							✓	
2	R30001601	ROD Ø16 L257mm	1	✓		✓	✓	✓	✓	✓	✓	✓	✓		✓	✓			✓	✓					✓	
	R30001602	ROD Ø16 L257mm	1		✓										✓				✓							
	R30001603	ROD Ø16 L254mm	1											✓			✓	✓								
	R30001604	ROD Ø16																							✓	
	R30001801	ROD Ø18 L250mm	1																				✓			
	R30001802	ROD Ø18 L248mm	1																			✓				
	R30001803	ROD Ø18 L254mm	1																				✓		✓	
3	R29900003	PUSH ROD	1	✓	✓	✓	✓																			
	R29900004		1					✓	✓	✓	✓	✓	✓								✓					
	R29900005		1												✓	✓	✓	✓	✓	✓						
	R29900006		1																			✓	✓	✓	✓	
	R29900007		1																				✓			
4	R27800002	ROD END	1	✓	✓	✓	✓	✓	✓	✓	✓	✓	✓	✓	✓	✓	✓	✓	✓	✓	✓	✓	✓	✓	✓	
	R27800003		1																							
5	R41001601	LOCK NUT Ø16	1	✓	✓	✓	✓	✓	✓	✓	✓	✓	✓	✓	✓	✓	✓	✓	✓	✓					✓	
	R41001801	LOCK NUT Ø18	1																		✓	✓	✓	✓		
6	R34000004	O RING	1					✓	✓	✓	✓	✓	✓								✓	✓	✓	✓		



FRONT FORK OIL		
TYPE OF OIL	REFERENCE	FORMAT
A15-00 15,3 cSt @ 40°C	L598A15001	FF oil A15-00 1L
	L598A15020	FF oil A15-00 CAN 20L
	L598A15005	FF oil A15-00 5 L
	L598A15200	FF oil A15-00 drum 200L
SS05 15,1 cSt @ 40°C	L598005001	FF oil SS05 1L
	L598005020	FF oil SS05 CAN 20L
	L598005005	FF oil SS05 5L
	L598005200	FF oil SS05 drum 200L

REAR SHOCK OIL		
TYPE OF OIL	REFERENCE	FORMAT
SS25 11,63 cSt @ 40°C	L598025001	RC oil SS25 1L
	L598025020	RC oil SS25 CAN 20L
	L598025024	RC oil SS25 5 L
	L598025200	RC oil SS25 drum 200L



TECHNICAL GREASE	
REFERENCE	FORMAT
G597000500	500 gr.

# WORKS

GENUINE PARTS EUROPE



## FRONT FORK OIL

TYPE OF OIL	REFERENCE	FORMAT
FF05 15,1 cSt at 40°C	L598FF0501	WORKS FF oil 1L
	L598FF0505	WORKS FF oil 5L
	L598FF0510	WORKS FF oil 10L

## REAR SHOCK OIL

TYPE OF OIL	REFERENCE	FORMAT
RR25 11,27 cSt at 40°C	L598RR2501	WORKS RR oil 1L
	L598RR2505	WORKS RR oil 5L
	L598RR2510	WORKS RR oil 10L



Slacker can show you your static sag, rider sag and tell you if your suspension is healthy and has the correct spring rates installed, all within a minute. It has also some additional items to complete the tool:

- Wireless Remote
- Smartphone Bar
- Adhesive Loops
- Nylon Case

# WORKS

GENUINE PARTS EUROPE

- SLIDE PIPE



N	REFERENCE	NAME PART	QTY	18-26 CRF	17-26 CRF	17-26 CRF	KXF 250 25	KXF 450 19-26	RMZ 450 18-26
	F30504909	WORKS Slide pipe Ø49 L=595mm RAINBOW	2	✓	✓	✓	✓	✓	✓
	F30504908	WORKS Slide pipe Ø49 L=595mm DLC	2	✓	✓	✓	✓	✓	✓
	F30504809	WORKS Slide pipe Ø48 L=600mm / KYB RAINBOW	2						
	F30504808	WORKS Slide pipe Ø48 L=595mm / WP RAINBOW	2						
1	F30504707	WORKS Slide pipe Ø47 L=597mm / RAINBOW	2						

# SHOWA

by GENUINE PARTS EUROPE

WORKS

# WORKS

GENUINE PARTS EUROPE

- UPGRADE KITS



This upgrade kit is designed to optimize both the performance and aesthetics of your suspension. It includes Rainbow slide pipes, Kashima-coated outer tubes, and high-precision machined axle holders. The surface treatments applied reduce friction, improving suspension smoothness and increasing durability to ensure consistent performance over time.

With this kit, you'll not only achieve an exterior look identical to Factory Racing models, but also enhance the reliability and behavior of your suspension — ideal for those who demand the very best in quality and performance.

# WORKS

GENUINE PARTS EUROPE

- UPGRADE KITS



Available for:

-HONDA CRF 250/450 18-26

-KAWASAKI KXF 250 25/26 KXF 450 19-26

Reference: KTWHON001/KTWKAW001

PRICE: 1499€

\*The fork bolt is selectable by the customer for an additional cost equal to the price of the selected fork bolt.

Fork bolt of the photo → F45000032

# SHOWA

by GENUINE PARTS EUROPE

WORKS

# WORKS

GENUINE PARTS EUROPE

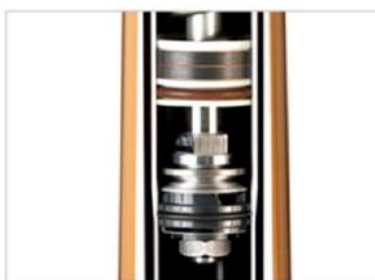
- WORKS FORK

# SHOWA

by GENUINE PARTS EUROPE

WORKS FRONT FORK

KTM/GASGAS/HUSQVARNA



## TECH INFO

Spring fork construction.  
+30mm stroke vs OEM.  
Twin chamber structure cartridge.  
Low friction free piston.  
Kashima coated outertubes.  
Inner tube diameter Ø49 mm.  
PVD treatment for slidepipes with emerald colour.  
Black CNC anodized axleholders racing style.  
REB and COMP adjustment.  
CNC tripleclamps included.  
Clicker adjuster included in the fork bolt.  
Spring rate personalized.

PN: FFWKT001 (Motocross)  
FFWKT002 (Enduro)  
FFWKT003 (Hard Enduro)

**WORKS**  
GENUINE PARTS EUROPE

PVP: 3.149€ + taxes



[www.showabygenuinepartseurope.com](http://www.showabygenuinepartseurope.com)

# SHOWA

by GENUINE PARTS EUROPE

WORKS

# WORKS

GENUINE PARTS EUROPE

- WORKS FORK

49mm Ø FRONT FORK

**WORKS**  
GENUINE PARTS EUROPE



#### TECHNICAL INFORMATION

- Spring fork construction.
- +30mm stroke vs. OEM
- Twin chamber structure cartridge.
- Low friction free piston.
- Dark Kashima coated outer tubes.
- Slide pipe 49mm Ø PVD Emerald coated.
- Black full CNC anodized Axle Holders.
- REB. And COMP. Full adjustment.
- CNC triple clamps included.

-REF. **FFWYAM001**

" Fits in many models, please contact us for more details "

**TENERE  
700**

[www.showabygenuinepartseurope.com](http://www.showabygenuinepartseurope.com)

# SHOWA

by GENUINE PARTS EUROPE

WORKS

# WORKS

GENUINE PARTS EUROPE

- WORKS FORK

## WORKS' LINE.

### Applications

Sherco 125 SE 21-24

Sherco 250 SE / SEF 19-24

Sherco 300 SE / SEF 22-24

Sherco 450 SEF 19-24

Sherco 500 SEF 19-24

Also for Hard Enduro Riders

## FRONT FORK WORKS

SHERCO ALL MODELS / SEF - SE



## TECH INFO

Spring fork construction.  
Twin chamber structure cartridge.  
Low friction free piston.  
Dark kashima coated outertubes.  
Slide pipe diameter Ø49 mm.  
PVD coat for slidepipes.  
Black full CNC anodized axelholders.  
REB and COMP adjustment.  
STD triple clamps, STD brake system, STD wheel can be used.

Spring personalized.

PN:FFWSHE001



PRICE : 2599€ + TAX

## SHERCO

[www.showabygenuinepartseurope.com](http://www.showabygenuinepartseurope.com)

# SHOWA

by GENUINE PARTS EUROPE

WORKS

# WORKS

GENUINE PARTS EUROPE

- WORKS FORK

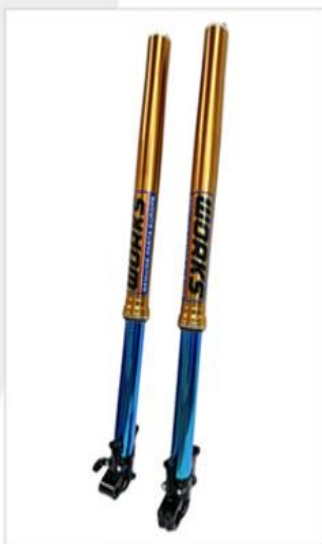
## SHOWA

by GENUINE PARTS EUROPE



## WORKS

GENUINE PARTS EUROPE



### Applications

CRF 250-450 17-26

### TECH INFO

Spring fork construction.  
+30mm stroke vs OEM.  
Twin chamber structure cartridge.  
Low friction free piston.  
Kashima coated outertubes.  
Inner tube diameter Ø49 mm.  
PVD treatment for slidepipes.  
Black CNC anodized axelholders.  
REB and COMP adjustment.

Take your riding to the next level with the Showa Works Front Fork, designed for the Honda CRF 250R and CRF 450R (2017 up to 2026). This high-performance fork is built to deliver unmatched precision, stability, and adjustability.

Key Features:

**Factory-Grade Engineering:** Derived from Showa's top-level racing programs, giving you works-level suspension performance right out of the box. **High-Rigidity Inner and Outer Tubes:** Designed to minimize flex for more accurate front-end feel and control under hard braking and aggressive cornering.

**Advanced Coatings:** Features DLC Rainbow (Diamond-Like Carbon) coated inner tubes for reduced friction and Kashima outer tube coating for smoother action and extended durability.

**Fully Adjustable:** Fine-tune your setup with independent compression and rebound damping adjusters for both high and low-speed responses.

**Optimized Performance Across Terrains:** Whether you're racing or pushing the limits in training, the fork adapts to varying conditions with confidence-inspiring feedback and traction.

Comes complete, ready to install

Limited edition blue fork caps and clickers → You can select the fork bolts you want for you bike!

# WORKS

GENUINE PARTS EUROPE

- PISTON ROD COMP



High-performance complete piston rod.

Improved compression: Optimized for better impact absorption and faster response under load.

Ø18 mm shaft, treated with black DLC for increased durability and resistance to friction and wear.

Rebound bumper: New formulation with a higher hardness constant for improved rebound performance and better control.

Elegant black finish for an aggressive, race-inspired look, while also enhancing corrosion and wear resistance. Also available with rainbow rod.

Price: 550€

Available for:

-HONDA CRF 250/450 17-25

-KAWASAKI KXF 250 17-20 AND 25/KXF 450 17-25

-SHERCO

Reference: R12000005/R12000006/R12000007/R12000008

# SHOWA

by GENUINE PARTS EUROPE

WORKS

# WORKS

GENUINE PARTS EUROPE

- RAINBOW ROD



Level up your rear shock with the WORKS RAINBOW ROD:

- Less friction
- More durability
- Exclusive Rainbow finish to give to your shock a racing look

Price:175€

References: R30001605/R30001805

## MERCHANDISE



GPECAP001-12€



BPS000001-120€



CARPETGPE-120€



WFLEL0001-154.95€



WTEEL0001-32.95€



WPOLM0001-64.95€

# **SHOWA**

*by* **GENUINE PARTS EUROPE**

**MORE INFO:**

**[contact@showabygenuinepartseurope.com](mailto:contact@showabygenuinepartseurope.com)**

**CATALOG VERSION:V.23.1**